

GIRLS' SWEET 16 CHAMPIONSHIP

First Round

BUTLER

VS.

CLAY COUNTY

March 24, 1993

VISITORS (Last Name, First)

NO.	CLAY COUNTY	Tot FG		3-POINT		FT		Rebounds			PF	TP	A	TO	BLK	S	TIME	
		FG	FGA	FG	FGA	FT	FTA	OFF	DEF	TOT								
45	REID, AMANDA	4	7	0	0	2	3	5	1	6	3	10	1	1	0	0	24:50	
51	JACKSON, VONDA	6	12	0	0	2	8	1	10	11	2	14	0	4	1	1	31:02	
55	DEZARN, LESLEY	0	2	0	0	0	0	1	2	3	2	0	0	0	1	0	25:36	
25	GRAY, ANGELA	4	9	0	0	1	3	1	5	6	4	9	4	2	0	1	25:13	
31	SANDLYN, ANGIE	3	5	0	0	1	4	1	1	2	3	7	1	6	0	3	20:06	
23	MILLER, LESLIE	3	5	3	5	0	0	0	1	1	2	9	0	1	0	1	20:18	
15	BARNES, GRETCHEN	1	4	0	0	0	0	1	1	2	0	2	0	0	1	0	11:04	
41	MESSER, CRYSTAL	0	0	0	0	0	0	0	0	0	0	0	0	0	0	0	0:52	
33	GRAY, MICHELLE	0	0	0	0	0	0	0	0	0	0	0	0	0	0	0	0:26	
13	COVINS, HEATHER	0	0	0	0	0	0	0	0	0	0	0	0	0	0	0	0:9	
03	ROWLAND, J.	0	0	0	0	0	0	0	0	0	0	0	0	0	0	0	0:6	
05	BOWMAN, JENNIFER	0	0	0	0	0	0	0	0	0	0	0	0	0	0	0	0:6	
11	SIZEMORE, TAMMY	0	0	0	0	0	0	0	0	0	0	0	0	0	0	0	0:6	
53	GABBARD, KRISTIE	0	0	0	0	0	0	0	1	1	0	0	0	0	0	0	0:6	
TEAM REBOUNDS (INCLUDED IN TOTALS)								3										
TOTALS		21	44	3	5	6	18	10	25	35	16	51	6	14	3	6	160	

TOTAL FG	1st HALF	3/5	60.0%	2nd HALF	18/39	46.2% GAME	21/44	47.7% DEADBALL
3-POINT FG	1st HALF	1/1	100.0%	2nd HALF	2/4	50.0% GAME	3/5	60.0% REBOUNDS 4
FREE THROWS	1st HALF	1/2	50.0%	2nd HALF	5/16	31.3% GAME	6/18	33.3%

HOME (Last Name, First)

NO.	BUTLER	Tot FG		3-POINT		FT		Rebounds			PF	TP	A	TO	BLK	S	TIME	
		FG	FGA	FG	FGA	FT	FTA	OFF	DEF	TOT								
14	SHAW, TOOTIE	5	12	0	1	2	2	0	2	2	1	12	1	2	1	1	26:57	
44	WHITE, STEPHANIE	1	4	0	0	1	2	5	3	8	2	3	0	1	0	0	25:02	
55	PORTER, HARRITA	4	8	0	0	2	5	1	5	6	4	10	1	2	1	0	22:08	
10	KURTSINGER, TIA	1	5	1	4	1	2	0	2	2	4	4	2	4	0	1	26:28	
11	PEPPER, SHON	2	3	0	3	0	0	0	1	1	5	4	5	4	0	0	29:20	
50	HIGHLAND, BROOKE	0	2	0	0	0	0	0	1	1	4	0	0	1	0	0	11:06	
03	CRAIN, DANA	1	4	1	3	0	0	0	0	0	1	3	0	0	0	0	11:02	
41	MARTIN, JULIE	0	1	0	0	0	0	0	1	1	0	0	0	1	0	0	3:56	
05	WIN, DEE DEE	0	0	0	0	0	0	0	0	0	0	0	0	1	0	0	3:43	
13	ALLEN, HEATHER	0	0	0	0	0	0	0	0	0	0	0	0	0	0	0	0:6	
23	MONKS, JENNY	0	1	0	1	0	0	0	0	0	0	0	0	0	0	0	0:6	
30	BROWN, KERI	0	0	0	0	0	0	0	0	0	0	0	0	0	0	0	0:6	
TEAM REBOUNDS (INCLUDED IN TOTALS)								2										
TOTALS		14	45	2	12	6	13	11	21	32	19	36	9	16	2	2	160	

TOTAL FG	1st HALF	4/13	30.8%	2nd HALF	10/32	31.3% GAME	14/45	31.1% DEADBALL
3-POINT FG	1st HALF	0/1	0.0%	2nd HALF	2/11	18.2% GAME	2/12	16.7% REBOUNDS 2
FREE THROWS	1st HALF	1/3	33.3%	2nd HALF	5/10	50.0% GAME	6/13	46.2%

OFFICIALS: TOMMY HALL, DENNIS JACKSON, ALT. - L. RUSSELL
 Technicals: None

SCORE BY PERIODS				
CLAY COUNTY	8	17	11	15 = 51
BUTLER	9	3	13	11 = 36

Attendance: 3,850

COMMENTS: POINTS OFF TURNOVERS

CLAY COUNTY 17 BUTLER

SECOND CHANCE POINTS

7 CLAY COUNTY 11 BUTLER

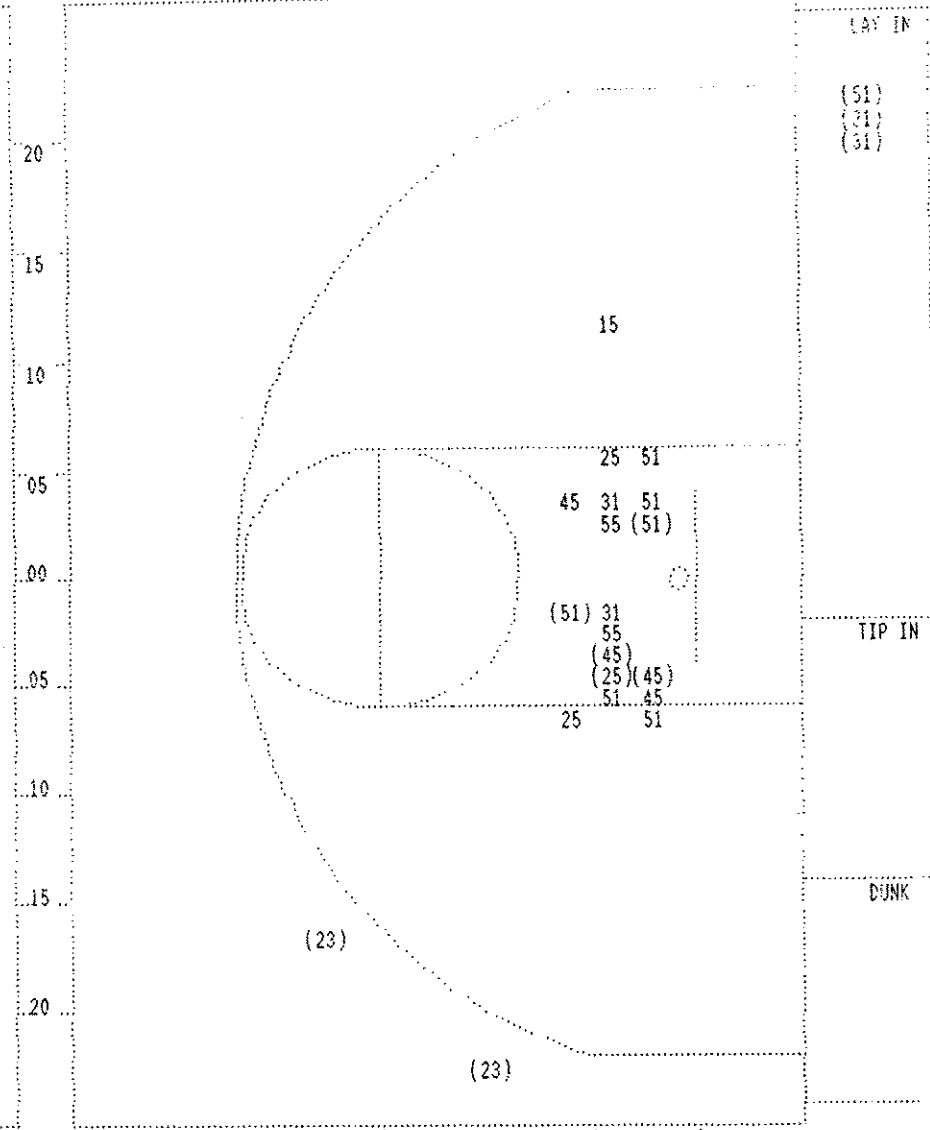
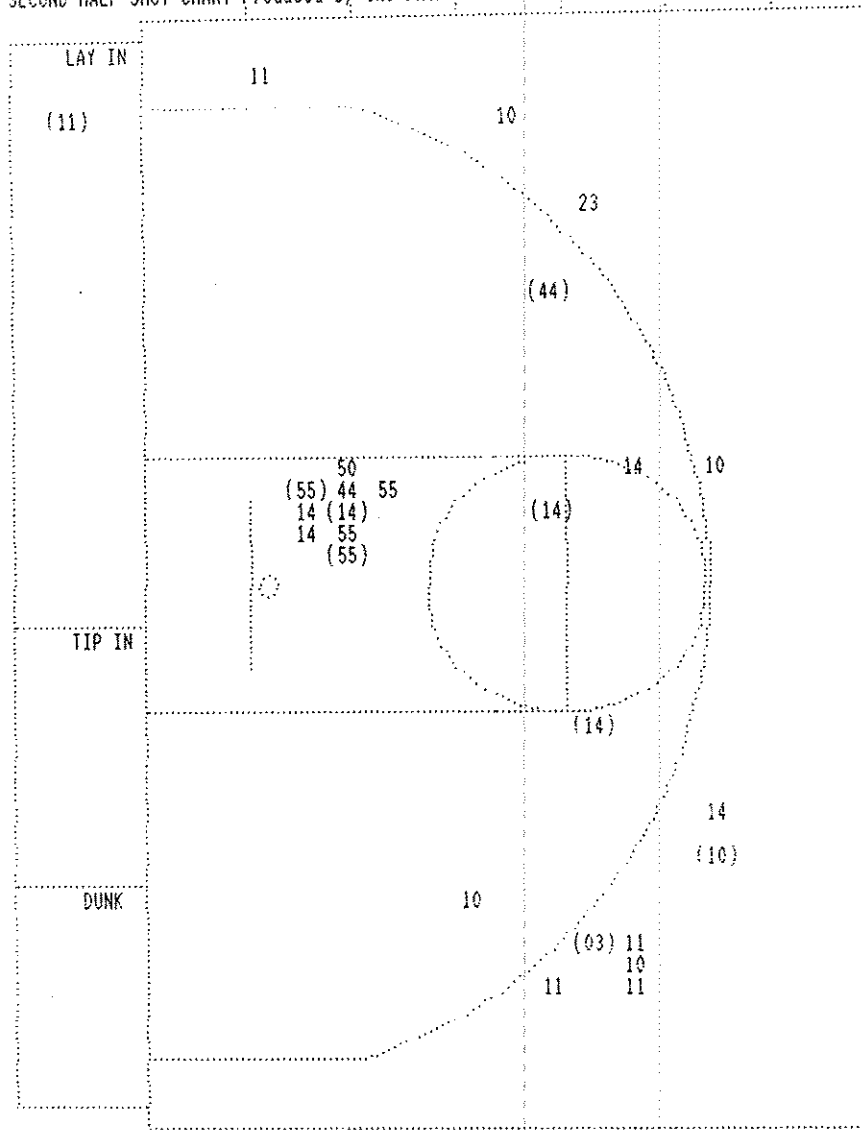
5

Player	Team	BUTLER
SHAW, TOOTIE	WHITE	STEPHANIE, PORTER, MARRITA, KURTSSINGER, TIA, PEPPER, SHON
2-7	28.5% 10-34 29.4%	Layup Off Fast Break by PEPPER, SHON Assist by PORTER, MARRITA
1	6	
1	4	Foul on SHAW, TOOTIE
1-4	25.0% 11-35 31.4%	18 ft Right Side Jump shot by WHITE, STEPHANIE Assist by SHAW, TOOTIE
1	7	
4-8	50.0% 12-36 33.3%	3 ft Lane Turnaround by PORTER, MARRITA Sub In: CRAIN, DANA Out: PEPPER, SHON
2-5	40.0% 6-13 46.1%	PORTER, MARRITA, 2 Free Throws missed both
1-4	25.0% 13-37 35.1%	3 pt 21 ft Left Side Jump shot by CRAIN, DANA Assist by KURTSSINGER, TIA
2	8	
		Sub In: PEPPER, SHON Out: WHITE, STEPHANIE
1	5	Foul on KURTSSINGER, TIA
4	6	Foul on PORTER, MARRITA
5-11	45.4% 14-41 34.1%	15 ft Left Angle Jump shot by SHAW, TOOTIE Assist by PEPPER, SHON
5	9	
2	7	Foul on KURTSSINGER, TIA
4	8	Foul on PEPPER, SHON Sub In: HIGHLAND, BROOKE Out: PORTER, MARRITA
1	9	Foul on CRAIN, DANA
5	10	Foul on PEPPER, SHON

Time	Score	CLAY COUNTY	Player	Team
4 7:35	*27-36	REID, AMANDA, JACKSON, VONDA, DEZARN, LESLEY, GRAY, ANGELA, SANDLIN, ANGIE		
		Ball to TIGERETTES		
4 7:19				
4 7:19	27-38*	REID, AMANDA, 2 Free Throws made both	2-3	66.6% 4-11 36.3%
4 7:03	*29-38			
4 6:38		Foul on GRAY, ANGELA	4	6
4 6:38		Sub In: MILLER, LESLIE Out: GRAY, ANGELA		
4 6:00	*31-38			
4 5:36				
4 5:36	31-40*	3 ft Lane Driving by JACKSON, VONDA	5-10	50.0% 17-38 44.7%
4 5:08		Foul on DEZARN, LESLEY	2	7
4 5:07				
4 4:41	31-43*	3 pt 23 ft Right Side Jump shot by MILLER, LESLIE Assist by REID, AMANDA	3-5	60.0% 18-39 46.1%
4 4:31			1	5
4 4:31		REB: 26 A: 7 BLK: 2 TO: 13 PF: 4 S: 2 FT: 6-13 46.1% FG: 12-36 33.3%		
No. 1 BUTLER	T I M E - O U T	REB: 28 A: 5 BLK: 3 TO: 12 PF: 7 S: 5 FT: 4-11 36.3% FG: 18-39 46.1%		
4 4:21	*34-43			
4 3:39	34-45*	4 ft Lane Driving by JACKSON, VONDA	6-11	54.5% 19-40 47.5%
4 3:02				
4 2:49		Sub In: GRAY, ANGELA Out: MILLER, LESLIE		
4 2:01	34-47*	Layup Off Fast Break by SANDLIN, ANGIE	2-4	50.0% 20-42 47.6%
4 2:01				
4 2:01		REB: 27 A: 8 BLK: 2 TO: 14 PF: 5 S: 2 FT: 6-13 46.1% FG: 13-40 32.5%		
No. 2 BUTLER	T I M E - O U T	REB: 31 A: 5 BLK: 3 TO: 14 PF: 7 S: 6 FT: 4-11 36.3% FG: 20-42 47.6%		
4 2:01				
No. 3 BUTLER	T I M E - O U T	REB: 31 A: 5 BLK: 3 TO: 14 PF: 7 S: 6 FT: 4-11 36.3% FG: 20-42 47.6%		
4 2:01		SANDLIN, ANGIE, 1 Free Throw missed	0-1	00.0% 4-12 33.3%
4 1:55				
4 1:55	34-48*	JACKSON, VONDA, 2 Free Throws missed 1st made 2nd	2-7	28.5% 5-14 35.7%
4 1:43	*36-48			
4 1:20				
4 1:20		JACKSON, VONDA, 1 & Bonus missed 1st	2-8	25.0% 5-15 33.3%
4 0:48				
4 0:48		SANDLIN, ANGIE, 1 & Bonus missed 1st	0-2	00.0% 5-16 31.2%
4 0:30				
4 0:30		SANDLIN, ANGIE, 1 & Bonus missed 1st	0-3	00.0% 5-17 29.4%
4 0:06	36-50*	Layup Off Fast Break by SANDLIN, ANGIE Assist by GRAY, ANGELA	3-5	60.0% 21-44 47.7%
4 0:06			4	6
4 0:06		Subs In: ROWLAND, J., BOWMAN, JENNIFER, SIZEMORE, TAMMY, GABBARD, KRISTIE Out: GRAY, ANGELA, REID, AMANDA, JACKSON, VONDA, DEZARN, LESLEY		
4 0:06		Sub In: ALLEN, HEATHER Out: KURTSSINGER, TIA		
4 0:06		Sub In: MONKS, JENNY Out: HIGHLAND, BROOKE		
4 0:06		Sub In: BROWN, KERI Out: PEPPER, SHON		
4 0:06	36-51*	SANDLIN, ANGIE, 1 Free Throw made	1-4	25.0% 6-16 33.3%
4 0:06		Sub In: LOVINS, HEATHER Out: SANDLIN, ANGIE		
4 0:06		Rebound by GABBARD, KRISTIE	D-1 Tot-1	D-1 Tot-35

Player	Team	BUTLER
SHAW, TOOTIE, WHITE, STEPHANIE, PORTER, MARRITA, KURTSINGER, TIA, PEPPER, SHON		
3-6	50.0%	6-20 30.0%
2		3
4 ft Lane Jump shot by SHAW, TOOTIE Assist by PEPPER, SHON		
Sub In: HIGHLAND, BROOKE Out: SHAW, TOOTIE		
1-1	100%	7-27 25.9%
3		4
Foul on HIGHLAND, BROOKE 3 pt 23 ft Left Angle Jump shot by KURTSINGER, TIA Assist by PEPPER, SHON		
3-6	50.0%	8-30 26.6%
4 ft Lane Follow by PORTER, MARRITA Sub In: SHAW, TOOTIE Out: HIGHLAND, BROOKE		
2-2	100%	4-9 44.4%
SHAW, TOOTIE, 2 Free Throws made both		
2-3	66.6%	6-11 54.5%
PORTER, MARRITA, 2 Free Throws made both		
4-9	44.4%	9-31 29.0%
4		5
2		2
3		3
13 ft Lane Jump shot by SHAW, TOOTIE Assist by PEPPER, SHON Foul on PEPPER, SHON Foul on PEPPER, SHON		

Time	Score	CLAY COUNTY	Player	Team
REID, AMANDA, JACKSON, VONDA, DEZARN, LESLEY, GRAY, ANGELA, SANDLIN, ANGIE				
Ball to TIGERETTES				
3	7:51	12-27*	4 ft Lane Follow by REID, AMANDA	3-4 75.0% 12-24 50.0%
3	7:39	*14-27		
3	7:17	14-29*	3 ft Lane Follow by REID, AMANDA	4-5 80.0% 13-26 50.0%
3	6:27		Player Control Foul on SANDLIN, ANGIE	3 1
3	6:27		Sub In: MILLER, LESLIE Out: SANDLIN, ANGIE	
3	6:27			
3	5:53	14-31*	4 ft Lane Driving by GRAY, ANGELA	4-8 50.0% 14-27 51.8%
3	5:46		Foul on GRAY, ANGELA	2 2
3	5:35			
3	4:51	*17-31		
3	4:31	17-34*	3 pt 23 ft Right Angle Jump shot by MILLER, LESLIE Assist by GRAY, ANGELA	2-4 50.0% 15-29 51.7%
3	3:25	*19-34		3 4
3	2:52		Foul on GRAY, ANGELA	3 3
3	2:52			
3	2:52		Sub In: SANDLIN, ANGIE Out: GRAY, ANGELA	
3	2:51		Foul on REID, AMANDA	3 4
3	2:51		Sub In: BARNES, GRETCHEN Out: REID, AMANDA	
3	2:51	*21-34		
3	2:22		Foul on DEZARN, LESLEY	1 5
3	2:22	*23-34		
3	2:09	23-36*	Driving Layup by JACKSON, VONDA	4-8 50.0% 16-23 48.4%
3	1:52	*25-36		
3	1:30			
3	0:56			
3	0:56		JACKSON, VONDA, 2 Free Throws missed both	1-5 20.0% 2-9 22.2%



BUTLER					
Player			Player		
14 - SHAW, TOOT	3 / 7	42.8%	03 - CRAIN, DAN	1 / 1	100.0%
44 - WHITE, STEP	1 / 2	50.0%	23 - MONKS, JEN	0 / 1	0.0%
55 - PORTER, MA	2 / 4	50.0%	50 - HIGHLAND, B	0 / 1	0.0%
10 - KURTSINGER	1 / 5	20.0%			
11 - PEPPER, SH	1 / 5	20.0%			
Layups	1-9 Ft	10-15 Ft	Over 15 Ft	3 Pointers	Total
1 / 1	3 / 9	2 / 2	1 / 4	2 / 10	9 / 26
100.0%	33.3%	100.0%	25.0%	20.0%	34.6%

CLAY COUNTY					
Player			Player		
45 - REID, AMAN	2 / 4	50.0%	15 - BARNES, GRE	0 / 1	0.0%
51 - JACKSON, V	3 / 7	42.8%	23 - MILLER, LE	2 / 2	100.0%
55 - DEZARN, LE	0 / 2	0.0%			
25 - GRAY, ANGE	1 / 3	33.3%			
31 - SANDLIN, A	2 / 4	50.0%			
Layups	1-9 Ft	10-15 Ft	Over 15 Ft	3 Pointers	Total
3 / 3	5 / 17	0 / 1	2 / 2	10 / 23	
100.0%	29.4%	0.0%	100.0%	43.5%	

Official Boxscore * OFFICIAL FIRST HALF *

Date: 03-24-93 Site: GIRLS STATE TOURNEY GM 3

VISITORS (Last Name, First)

NO.	CLAY COUNTY	Tot		3-POINT		FT	FTA	Rebounds			PF	TP	A	TO	BLK	S	TIME
		FG	FGA	FG	FGA			OFF	DEF	TOT							
45	REID, AMANDA	2	3	0	0	0	1	3	0	3	2	4	0	1	0	0	11:47
51	JACKSON, VONDA	3	5	0	0	1	3	0	4	4	2	7	0	2	1	1	15:08
55	DEZARN, LESLEY	0	0	0	0	0	0	0	2	2	0	0	0	0	0	0	9:42
25	GRAY, ANGELA	3	6	0	0	1	3	1	4	5	1	7	2	2	0	1	16:00
31	SANDLIN, ANGIE	1	1	0	0	0	0	0	1	1	2	2	1	3	0	1	7:47
23	MILLER, LESLIE	1	3	1	3	0	0	0	0	0	2	3	0	1	0	1	10:02
15	BARNES, GRETCHEN	1	3	0	0	0	0	1	1	2	0	2	0	0	1	0	8:13
41	MESSER, CRYSTAL	0	0	0	0	0	0	0	0	0	0	0	0	0	0	0	0:52
33	GRAY, MICHELLE	0	0	0	0	0	0	0	0	0	0	0	0	0	0	0	0:26
13	LOVINS, HEATHER	0	0	0	0	0	0	0	0	0	0	0	0	0	0	0	0:3
TEAM REBOUNDS (INCLUDED IN TOTALS)								1									
TOTALS		11	21	1	3	2	7	5	13	18	9	25	3	9	3	4	80
TOTAL FG	1st HALF	3/5	60.0%	2nd HALF	8/16	50.0%	GAME	11/21	52.4%	DEADBALL							
3-POINT FG	1st HALF	1/1	100.0%	2nd HALF	0/2	0.0%	GAME	1/3	33.3%	REBOUNDS	2						
FREE THROWS	1st HALF	1/2	50.0%	2nd HALF	1/5	20.0%	GAME	2/7	28.6%								

HOME (Last Name, First)

NO.	BUTLER	Tot		3-POINT		FT	FTA	Rebounds			PF	TP	A	TO	BLK	S	TIME
		FG	FGA	FG	FGA			OFF	DEF	TOT							
14	SHAW, TOOTIE	2	5	0	0	0	0	0	4	4	0	4	0	1	1	0	14:32
44	WHITE, STEPHANIE	0	2	0	0	1	2	3	3	6	2	1	0	1	0	0	12:04
55	PORTER, HARRIJA	2	4	0	0	0	1	2	0	2	3	4	0	0	0	0	8:56
10	KURTSINGER, TIA	0	0	0	0	1	2	0	1	1	0	1	1	3	0	0	10:34
11	PEPPER, SHON	1	3	0	0	0	2	0	0	0	1	2	1	3	0	0	15:00
50	HIGHLAND, BROOKE	0	1	0	0	0	0	0	0	0	3	0	0	1	0	0	6:49
03	CRAIN, DANA	0	3	0	2	0	0	0	0	0	0	0	0	0	0	0	5:26
41	MARTIN, JULIE	0	1	0	0	0	0	0	1	1	0	0	0	1	0	0	3:56
05	WIN, DEE DEE	0	0	0	0	0	0	0	0	0	0	0	0	1	0	0	3:43
TEAM REBOUNDS (INCLUDED IN TOTALS)								5									
TOTALS		5	19	0	2	2	7	5	9	14	9	12	2	11	1	0	80
TOTAL FG	1st HALF	4/13	30.8%	2nd HALF	1/6	16.7%	GAME	5/19	26.3%	DEADBALL							
3-POINT FG	1st HALF	0/1	0.0%	2nd HALF	0/1	0.0%	GAME	0/2	0.0%	Rebounds	0						
FREE THROWS	1st HALF	1/3	33.3%	2nd HALF	1/4	25.0%	GAME	2/7	28.6%								

OFFICIALS: TOMMY HALL, DENNIS JACKSON, ALT.-L. RUSSELL
 Technicals: None

SCORE BY PERIODS
 CLAY COUNTY 8 17 = 25
 BUTLER 9 3 = 12

Attendance:

COMMENTS: POINTS OFF TURNOVERS
 CLAY COUNTY 11 BUTLER

SECOND CHANCE POINTS
 CLAY COUNTY 7 BUTLER 4

3

CLAY COUNTY "TIGERETTES" vs BUTLER "BEARETTES"
1st Half Play by Play

PAGE : 1

Tip off at 7:30 p.m. on 03/24/93 at GIRLS STATE TOURNEY GM 3
Produced by the KHSAA Sweet Sixteen Stat Crew with FINAL III - a Product of

Player	Team	BUTLER	Time	Score	CLAY COUNTY	Player	Team
SHAW, TOOTIE, WHITE, STEPHANIE, PORTER, MARRITA, KURTSINGER, TIA, PEPPER, SHON Ball to BEARETTES			REID, AMANDA, JACKSON, VONDA, DEZARN, LESLEY, GRAY, ANGELA, SANDLIN, ANGIE				
1-1	100%	1-1 100%	22 ft Right Angle Jump shot by SHAW, TOOTIE	1 7:40	*2-0		
			Assist by KURTSINGER, TIA				
1		1	Foul on PORTER, MARRITA	1 5:47	2-2*	2 ft Lane Bank by SANDLIN, ANGIE	1-1 100% 1-3 33.3%
1		2	Foul on WHITE, STEPHANIE	1 5:30			
				1 5:18			
				1 4:58		Foul on REID, AMANDA	
2-3	66.6%	2-7 28.5%	Bank Layup by SHAW, TOOTIE	1 3:58	2-4*	6 ft Left Base Line Jump shot by JACKSON, VONDA	1-2 50.0% 2-4 50.0%
1		2	Assist by PEPPER, SHON	1 3:40	*4-4		
				1 3:28		Player Control Foul on SANDLIN, ANGIE	
				1 3:28		Sub In: MILLER, LESLIE Out: DEZARN, LESLEY	1 2
1-3	33.3%	3-8 37.5%	4 ft Lane Driving by PORTER, MARRITA	1 3:21	*6-4		
				1 3:21		Foul on REID, AMANDA	2 3
				1 3:21		Sub In: DEZARN, LESLEY Out: REID, AMANDA	
0-1	00.0%	0-1 00.0%	PORTER, MARRITA, 1 Free Throw missed	1 3:21			
				1 3:18		Foul on GRAY, ANGELA	1 4
1-2	50.0%	1-3 33.3%	WHITE, STEPHANIE, 2 Free Throws made 1st missed 2nd	1 3:18	*7-4		
2-4	50.0%	4-10 40.0%	4 ft Lane Jump shot by PORTER, MARRITA	1 3:07	*9-4		
				1 3:06			
			REB: 7 A: 2 BLK: 0 TO: 1 PF: 2			REB: 2 A: 0 BLK: 1 TO: 2 PF: 4	
			S: 0 FT: 1-3 33.3% FG: 4-10 40.0%			S: 1 FT: 0-0 00.0% FG: 2-4 50.0%	
						CLAY COUNTY No. 1	
2		3	Foul on PORTER, MARRITA	1 2:32			
			Sub In: HIGHLAND, BROOKE Out: PORTER, MARRITA	1 2:32			
				1 1:34	9-7*	3 pt 23 ft Left Side Jump shot by MILLER, LESLIE	1-1 100% 3-5 60.0%
						Assist by SANDLIN, ANGIE	1 1
1		4	Foul on HIGHLAND, BROOKE	1 1:06			
			Sub In: CRAIN, DANA Out: KURTSINGER, TIA	1 1:06	9-8*	JACKSON, VONDA, 2 Free Throws missed 1st made 2nd	1-2 50.0% 1-2 50.0%
				1 1:06			
				1 0:13		Player Control Foul on SANDLIN, ANGIE	2 5
				1 0:13		Sub In: BARNES, GRETCHEN Out: SANDLIN, ANGIE	

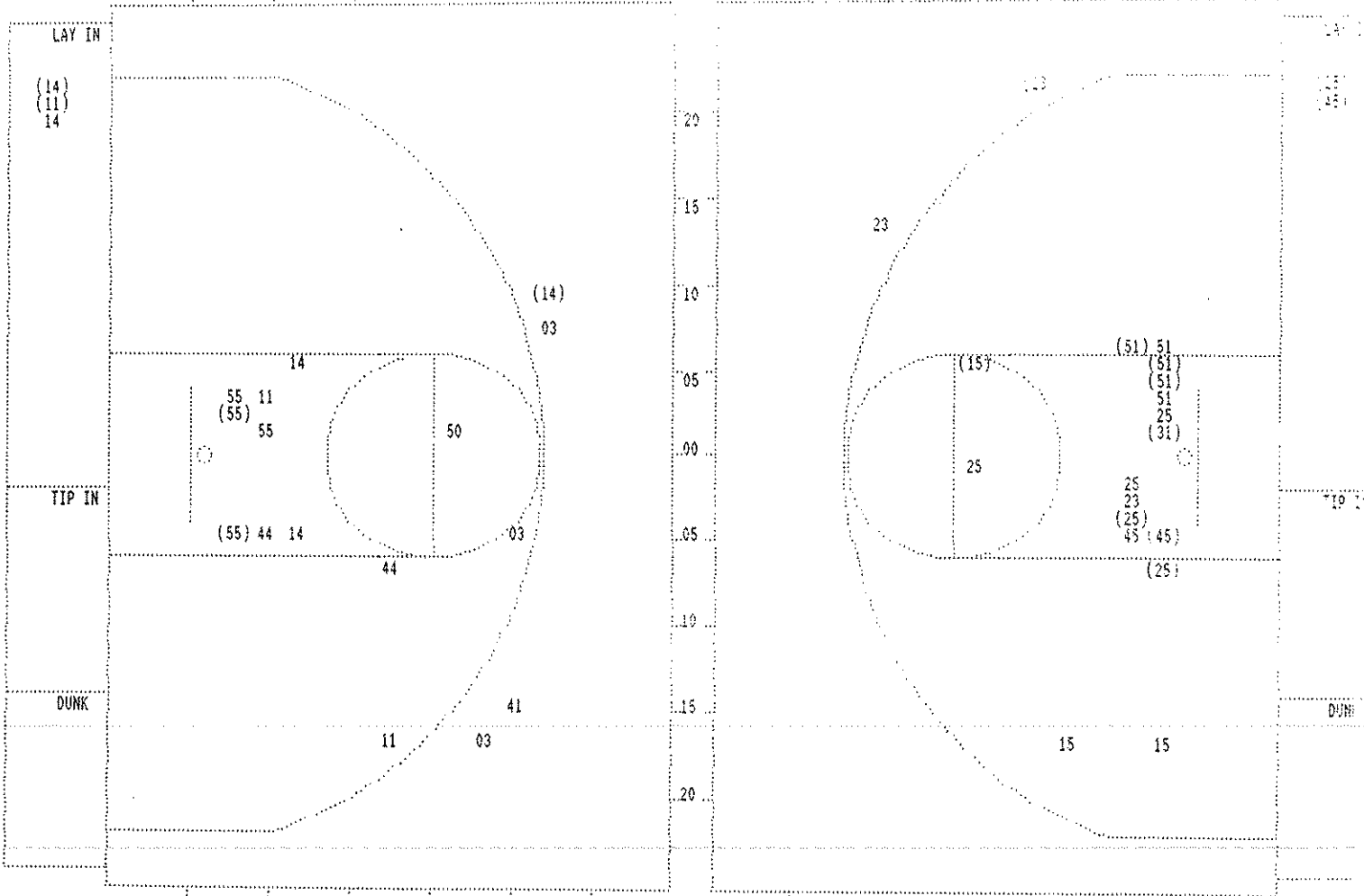
CLAY COUNTY "TIGERETTES" vs BUTLER "BEARETTES"
1st Half Play by Play

PAGE : 2

Tip off at 7:30 p.m. on 03/24/93 at GIRLS STATE TOURNEY GM 3
Produced by the KHSAA Sweet Sixteen Stat Crew with FINAL III - a Product of LEXI

Player	Team	BUTLER	Time	Score	CLAY COUNTY	Player	Team
PEPPER, SHON, SHAW, TOOTIE		HIGHLAND, BROOKE, CRAIN, DANA, MARTIN, JULIE			REID, AMANDA, JACKSON, VONDA, GRAY, ANGELA, BARNES, GRETCHEN, MILLER, LESLIE		
		Ball to BEARETTES					
			2 7:32		Foul on JACKSON, VONDA	1	6
			2 6:56	9-10*	13 ft Left Angle Jump shot by BARNES, GRETCHEN Assist by GRAY, ANGELA	1-2 50.0%	4-7 57.1%
			2 6:12	9-12*	Driving Layup by GRAY, ANGELA	1-2 50.0%	5-8 62.5%
2	5	Foul on HIGHLAND, BROOKE Sub In: PORTER, MARRITA Out: SHAW, TOOTIE	2 6:12				
			2 6:12		GRAY, ANGELA, 1 Free Throw missed	0-1 00.0%	1-3 33.3%
			2 5:40	9-14*	6 ft Lane Driving by GRAY, ANGELA	2-3 66.6%	6-9 66.6%
3	6	Foul on PORTER, MARRITA Sub In: SHAW, TOOTIE Out: PORTER, MARRITA	2 4:44				
			2 4:44				
			2 4:10	9-16*	3 ft Lane Follow by GRAY, ANGELA	3-5 60.0%	7-12 58.3%
			2 4:04		Foul on MILLER, LESLIE	1	7
0-1 00.0%	1-4 25.0%	Sub In: WHITE, STEPHANIE Out: MARTIN, JULIE PEPPER, SHON, 1 Free Throw missed	2 4:04				
			2 3:44	9-18*	4 ft Lane Turnaround by JACKSON, VONDA Assist by GRAY, ANGELA	2-3 66.6%	8-13 61.5%
			2 3:43			2	3
3	7	Foul on HIGHLAND, BROOKE Sub In: WIN, DEE DEE Out: HIGHLAND, BROOKE	2 3:43				
			2 3:43		JACKSON, VONDA, 1 Free Throw missed	1-3 33.3%	1-4 25.0%
2	8	Foul on WHITE, STEPHANIE Sub In: KURTSINGER, TIA Out: CRAIN, DANA	2 3:40				
			2 3:40		REID, AMANDA, 1 & Bonus missed 1st	0-1 00.0%	1-5 20.0%
			2 3:00	9-20*	4 ft Lane Jump shot by REID, AMANDA	1-2 50.0%	9-16 56.2%
1-3 33.3%	5-18 27.7%	Driving Layup by PEPPER, SHON	2 2:24	*11-20			
			2 2:04	11-22*	Driving Layup by REID, AMANDA	2-3 66.6%	10-18 55.5%
			2 1:52		Sub In: DEZARN, LESLEY Out: MILLER, LESLIE		
			2 1:07	11-24*	6 ft Left Base Line Jump shot by JACKSON, VONDA	3-5 60.0%	11-20 55.0%
			2 0:52		Foul on JACKSON, VONDA	2	8
			2 0:52		Sub In: MESSER, CRYSTAL Out: JACKSON, VONDA		
			2 0:52		Sub In: MILLER, LESLIE Out: REID, AMANDA		
0-2 00.0%	1-5 20.0%	PEPPER, SHON, 1 & Bonus missed 1st	2 0:52				
			2 0:26		Foul on MILLER, LESLIE	2	9
			2 0:26		Sub In: GRAY, MICHELLE Out: MILLER, LESLIE		
1-2 50.0%	2-7 28.5%	KURTSINGER, TIA, 1 & Bonus made 1st missed 2nd Foul on PEPPER, SHON	2 0:26	*12-24			
1	9		2 0:03				
			2 0:03		Sub In: LOVINS, HEATHER Out: DEZARN, LESLEY		
			2 0:03	12-25*	GRAY, ANGELA, 1 & Bonus made 1st missed 2nd	1-3 33.3%	2-7 28.5%
0-1 Tot-1	0-1 Tot-14	Rebound by SHAW, TOOTIE	2 0:00				

FIRST HALF SHOT CHART Produced by the KHSAA Sweet Sixteen Stat Crew with FINAL III - a Product of LEXICON SPORTS



BUTLER					
Player			Player		Player
14 - SHAW, TOOT	2 / 5	40.0%	41 - MARTIN, JU	0 / 1	0.0%
44 - WHITE, STEP	0 / 2	0.0%	50 - HIGHLAND, B	0 / 1	0.0%
55 - PORTER, MA	2 / 4	50.0%			
11 - PEPPER, SH	1 / 3	33.3%			
03 - CRAIN, DAN	0 / 3	0.0%			
Layups	1-9 Ft	10-15 Ft	Over 15 Ft	3 Pointers	Total
2 / 3	2 / 8	0 / 2	1 / 4	0 / 2	5 / 19
66.7%	25.0%	0.0%	25.0%	0.0%	26.3%

CLAY COUNTY					
Player			Player		Player
45 - REID, AMAN	2 / 3	66.6%	23 - MILLER, LE	1 / 3	33.3%
51 - JACKSON, V	3 / 5	60.0%			
25 - GRAY, ANGE	3 / 6	50.0%			
31 - SANDLIN, A	1 / 1	100.0%			
15 - BARNES, BRE	1 / 3	33.3%			
Layups	1-9 Ft	10-15 Ft	Over 15 Ft	3 Pointers	Total
2 / 2	7 / 12	1 / 2	0 / 2	1 / 3	11 / 21
100.0%	58.3%	50.0%	0.0%	33.3%	52.4%